

Model 2115

Wiring Test Analyzer



Portable

Modular

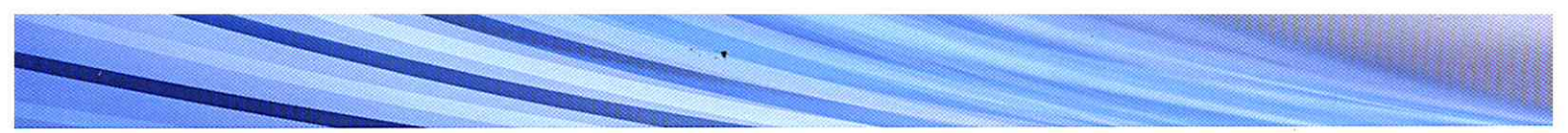
Powerful

Customizable

Cost Effective



 **DIT-MCO**
International



The Model 2115, *is a low cost 1500 volt circuit analyzer that provides speed, power, reliability and ease of use in a benchtop configuration. Used to test cables, harnesses, chassis and panels, you can find it in all sorts of places: right on the fabrication bench, a rack in the test department, or in the field.*

Powerful

Don't let the Model 2115's small size fool you. Its capabilities include everything you need for complete testing of wire harnesses and assemblies. You can even test components and activate relays for full functional testing.

Programmable

Testing up to 1500 volts, 2 amps, the Model 2115 tests wiring and components for leakage, resistance, voltage, capacitance, and dielectric breakdown.

Expandable

Options provide you with the power to tailor your system to your application. It's expandable with 1,000 point enclosures. It's also flexible with options including AC hipot, latching matrix and power supplies for functional testing of relay and control panels.

Lean Environments

The 2115 is perfect for lean environments. Deploy "right sized" testers right on the fabrication benches eliminating non-value added movement of materials.

Quality

DIT-MCO's quality system is certified to the international standard ISO 9001 and the aerospace standard AS9100.

Experienced

With over sixty years of wire harness testing, DIT-MCO is the most experienced manufacturer of test systems. Long term support ensures that your test system will not be obsolete and your investment lost.

Safe Operation

All parameters are programmable so you can use high voltage up to 1500V or low voltage down to 0.225V. Safety limits ensure that no excessive voltage will be used in situations where it may be hazardous and interlocks allow you to incorporate safety barriers.

Configurations

Available system options customize the test system to meet exacting test specifications.



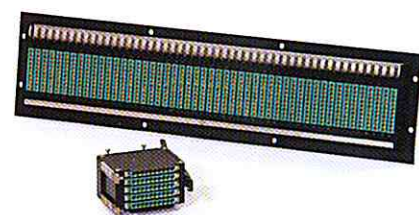
The compact and portable Model 2115 fits anywhere. The system utilizes a standard Windows PC with control through the network interface.



Alternative interfaces can be provided with the Model 2115. Common interfaces include Zero Insertion Force (ZIF), D-Sub and circular connectors.

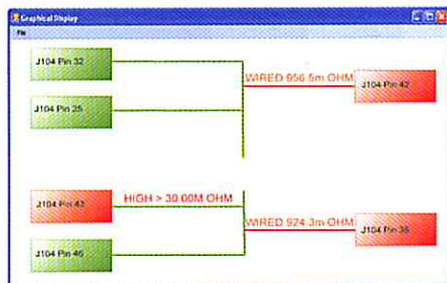


Larger configurations can be mounted into portable cabinets providing a simple way to move the system throughout the facility.



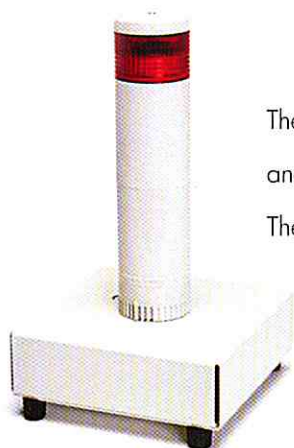
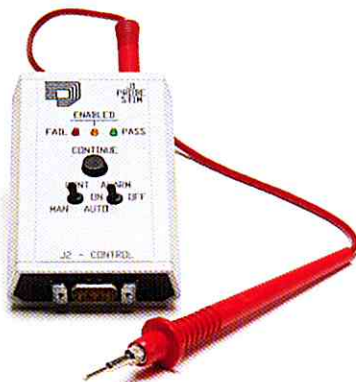
The modular EasyMate® connector system eliminates branched test adapters while maximizing test point utilization.

Get test results as a graphic rather than a printed report. Find faults faster without reading text based reports.



The continuity probe is used to verify connections to loose conductors. Both visual and audible indicators identify passing tests.

With the automatic advance, the probe can be used to simply step through the loose wires.



The safety indicator provides a visual and audible warning to active testing.

The safety indicator is supplied with all systems with AC dielectric but can also function with DC testing.

Standard Features

- Fast with tests up to 5,000 per minute
- Expandable up to 15,000 test points
- Tests continuity, leakage, resistance, capacitance, voltage (AC & DC), diodes
- Automatic program generation by learning product connections (self program)
- Floating measurement system for testing grounded products
- Programmable voltage, current, limits and dwell
- Programmable voltage ramping
- Two wire and four wire tests
- Safety interlock
- Safe stimulus with voltage as low as 0.25V
- 1,500 VDC Dielectric (Hipot)
- Convenient network control interface

Optional Features

- 1000 VAC Dielectric (Hipot)
- Energize relays with Latching Matrix option
- Fixed 28 VDC power supply
- Programmable power supply 3 – 60 VDC
- Customized connector interface

Operating Conditions

- Relative humidity: 30%-80% (RH non-condensing)
- Temperature (standard: 60°F-90°F (15°C-32°C))
- Power: 115 VAC, 230 VAC, 50/60 Hz

Master Switching Unit

- Up to 1,000 test points
- 23"d 19"w 11.5"h / 58cm d x 49cm w x 29cm h
- 85 lbs. / 39 kg.

Expansion Switching Unit

- Up to 1,000 test points
- 11"d 19"w 11.5"h / 28cm d x 49cm w x 29cm h
- 40 lbs. / 18 kg.

Standard Software

- TestLink® software includes:
 - TestEdit® - Text editor for test programs and address correspondence
 - TestExecutive® with self-programming and write error program (WEP)
 - Syntax Checker
 - Checksum generator and automatic verification
 - Diagnostics
 - Virtual Comparator for GPIB integration

Software Options

- TestAssistanti® II – Test interface and program designer
- Program Generation from wire list (APG)
- Test program translators

Powerful Instrumentation

The DIT-MCO standard measurement unit (SMU) delivers accurate measurements and generates the test stimulus across a broad range. The SMU utilizes an analog comparison to provide fast results with open and short circuits and a digital operation for resistive circuits.

- Resistance Measurements
- AC and DC Voltage Measurements
- Dielectric (Hipot) Testing
- Capacitance Measurements
- Programmable Dwell Times

Open Architecture

DIT-MCO's TestExecutive integrates instruments, power supplies or other GPIB devices. The Virtual Comparator software communicates to these devices without any specialized software development. You can simply control devices such as a power supply or you can use instruments to perform PASS/FAIL measurements within the standard test program.

2115 Standard Measurement Unit

Stimulus		
Low Voltage	0.225 to 29.75V	±3%
High Voltage	30 to 1500V	±3%
Current	0.005 to 2.0A	±3%
Continuity Test		
Two Wire	1 to 99.9KΩ	±1%
Four Wire	1mΩ to 999Ω	±1%
Insulation Test	10Ω to 999MΩ	±1%
	1GΩ to 5GΩ	+5% - 20%
Resistance		
Two Wire	1Ω to 999MΩ	±1%
Four Wire	1mΩ to 999Ω	±1%
Capacitance	10pF to 999.9pF	±10%
	1nF to 9.999nF	±5%
	10nF - 999.9nF	±2%
	1μF - 5000μF	±5%

Refer to technical documentation for valid ranges and full accuracy specifications.

Specifications subject to change without notice.



The Model 2115 fits into lean environments. The system's small footprint allows locating the tester in the fabrication area or moving it throughout the production facility.



DIT-MCO International Corporation, a worldwide leader in high voltage cable/harness test systems, has over 60 years experience in the manufacture of automatic test equipment for interconnect verification. Engineering, quality control/quality assurance, manufacturing and test personnel around the world use DIT-MCO systems. These testers are used in the aerospace (military and commercial), telecommunications and transit/rail industries. Headquartered in Kansas City, Missouri, DIT-MCO has sales and service offices in the US and UK, plus authorized agents and distributors in 13 other countries.

5612 Brighton Terrace
Kansas City, MO 64130 USA
(800) 821-3487
(816) 444-9700
Fax (816) 444-9737
Email infolink@ditmco.com
www.ditmco.com

In Europe:
Tel (44) 1482-662355
Fax (44) 1482-662356

